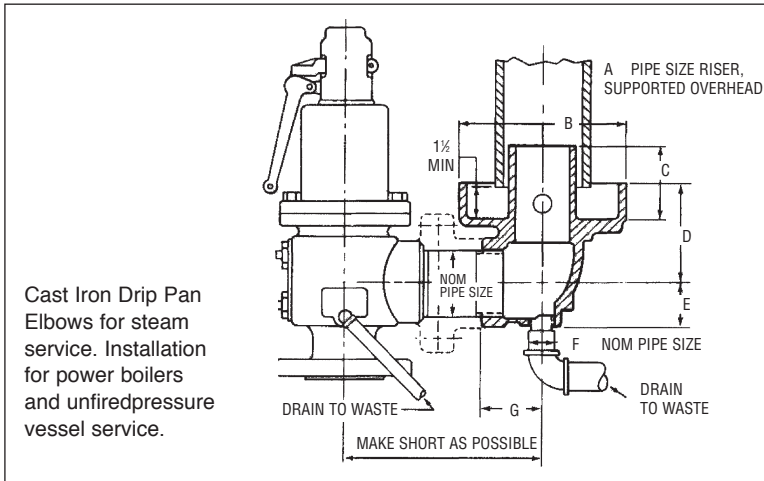


DRIP PAN ELBOWS



DIMENSIONS

Size	A	B	C	D	E	F	G	Wt. Lbs.
3/4-1"	1 1/2	3 3/4	1 3/4	2 3/4	1 1/2	3/4	1 1/2	2
1 1/4-1 1/2"	2 1/2	5 1/2	2 1/2	4 3/4	1 5/8	3/8	2 1/8	5
2"	3	6 1/4	2 3/4	3 3/4	1 5/8	1/2	2 1/4	7
2 1/2"	3 3/4	7 3/8	3	4 3/8	1 5/8	3/4	2 1/8	11
3"	4	8	3 1/2	4 3/4	2 3/8	3/4	3 1/8	19
4"	6	9 3/8	4 1/2	5 3/4	2 3/8	3/4	3 3/4	27
6"	8	12 3/4	6 3/8	7 3/8	4 3/8	3/4	8	80
8"	10	16 1/2	7 1/2	9 3/8	5 3/8	1	10 3/4	150
10"	FABRICATED STEEL—CONSULT FACTORY							

6" and 8" elbows have integral 125 lb. ANSI flange.

CAPACITIES OF CONTROL VALVES FOR WATER

Water Capacity Table Gallons Per Minute

PRESSURE DROP—pounds per square inch

VALVE SIZES	PRESSURE DROP—pounds per square inch												
	1	5	10	20	30	40	50	60	80	100	125	150	
1/2	2.7	6	9.1	13	16	19	21	25	27	31	34	39	
3/4	5.4	13	19	26	32	39	42	50	58	63	70	80	
1	8	18	27	38	48	58	62	73	81	90	100	120	
1 1/4	13	30	48	62	79	92	100	120	140	150	160	180	
1 1/2	22	48	73	99	120	150	160	190	220	240	270	300	
2	30	67	100	140	170	210	230	270	300	350	380	420	
2 1/2	44	95	150	200	250	300	350	390	440	500	550	620	
3	68	140	230	300	370	450	500	590	650	720	800	900	
4	180	400	600	800	1000	1300	1400	1600	1800	2000	2400	2500	
6	360	790	1200	1700	2100	2500	2700	3200	3600	4100	4800	5000	
8	740	1700	2600	3500	4400	5400	5900	6900	7700	8800	9800	12000	

PRESSURE DROP IS DIFFERENCE BETWEEN INLET PRESSURE AND REDUCED PRESSURE.

MULTIPLIERS TO BE USED

VALVE NO.	%	1/2	3/4	1	1 1/4	1 1/2	2	2 1/2	3	4	5	6	8	10
700		.40	.40	.40	.35	.35	.54	.44	.54	.35				
701							1.60	1.30	1.30	.90	1.00	1.00	.90	1.00
114-114R-116-116R		*	*	*	*	*	*	*	*	*	*	*	*	*
118-118R-119-119R		.55	.55	.55	.55	.55	.55	.55	.55	.55	.55	.55	.55	.55
11A	.60	.60	.40	.60	.40	.40	.30							

*USE TABLE AS SHOWN